

Corporate Occasions

HUs - Boutique Venue & Accommodation is an exclusive venue amongst an idyllic setting that provides the right balance of serenity and privacy with modern touches and style. We offer an inspirational space to create & develop new ideas for your next project.

We are extremely flexible and can tailor any event to suit your needs. Whether you need our space for a meeting, conference or celebration we have you covered!

HUs - Boutique Venue & Accommodation
45 Croft Lane,
Riverhead 0793
New Zealand

+64 21 059 7129
info@hus.nz
@husvenue



We are thrilled you're here!



The Venue

Nestled in the beauty of Riverhead, this stunning 20-acre property is the ideal backdrop for your event. HUs (pronounced 'Who's') is a boutique venue and accommodation combining modern, bespoke design with its natural green surroundings.

The property features a 500-SQM, two-storey barn situated on the entrance. The ground floor is an event gallery for hosting up to 85 guests.. Upstairs is our boutique accommodation with a full-length, partially covered balcony.

Take a break and enjoy a stroll to the pond surrounded by native forest, flora & fauna. We are a place to create, share and be uplifted.



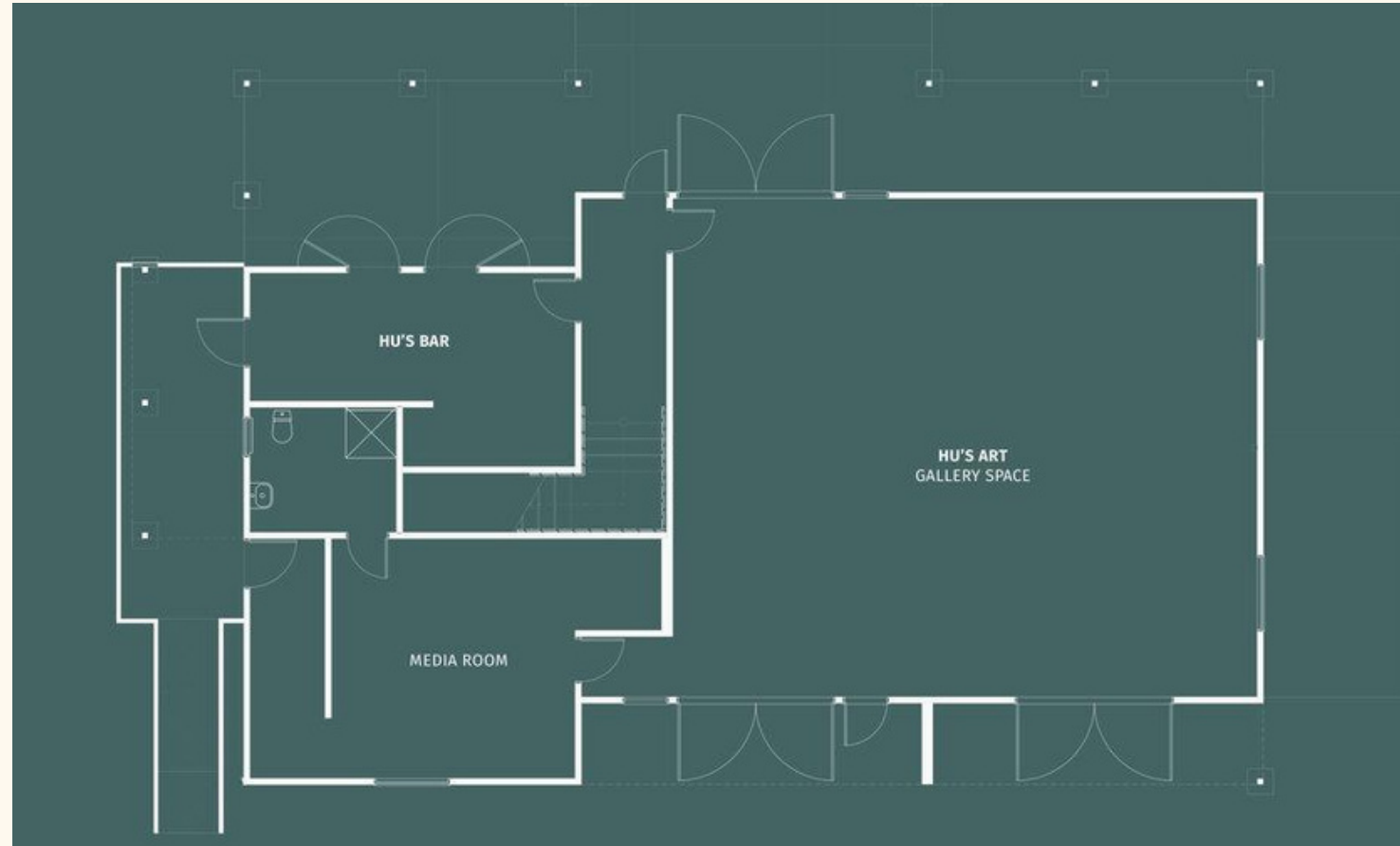
The Gallery

The purpose built gallery space is approximately 10 x 12 meters and opens up to a sprawling lawn with a forest backdrop. Ideal for large team building activities, conferences or a health space to practise yoga.

- Accommodate up to 85 delegates seated.
- 2 lighting options. Dimmable continuous LED strips on the ceiling and/or bright white tube lighting which is not dimmable.
- Acoustic ceiling panels and white acoustic curtains deaden the sound for quiet conversation.
- Large air conditioning unit for winter and summer activity.
- State of the art in house speaker and amp system.
- Full height white sheers that are continuous around 3 walls.
- Separate lounge/media room with disabled toilet.



Gallery Floor Plan



Accommodation

The accommodation is situated upstairs with 6 bedrooms (2 ensuites & 2 shared bathrooms). Each uniquely styled bedroom is named after local flora and fauna with connection to the farm.

In the centre between all of the bedrooms is the open plan lounge and dining area that opens up onto a covered deck. With its open beam ceiling and many lighting options this space transforms with the flick of a switch.

It is the perfect place to lounge around with a stunning view straight out to the Riverhead forest.

The large wooden dining table is ideal for small group planning sessions up to 10 guests or enjoying your own meals.



Bed Configuration

Kauri Bedroom
King can be split into 2 (Ensuite)

Peony Bedroom
Twin single (Ensuite)

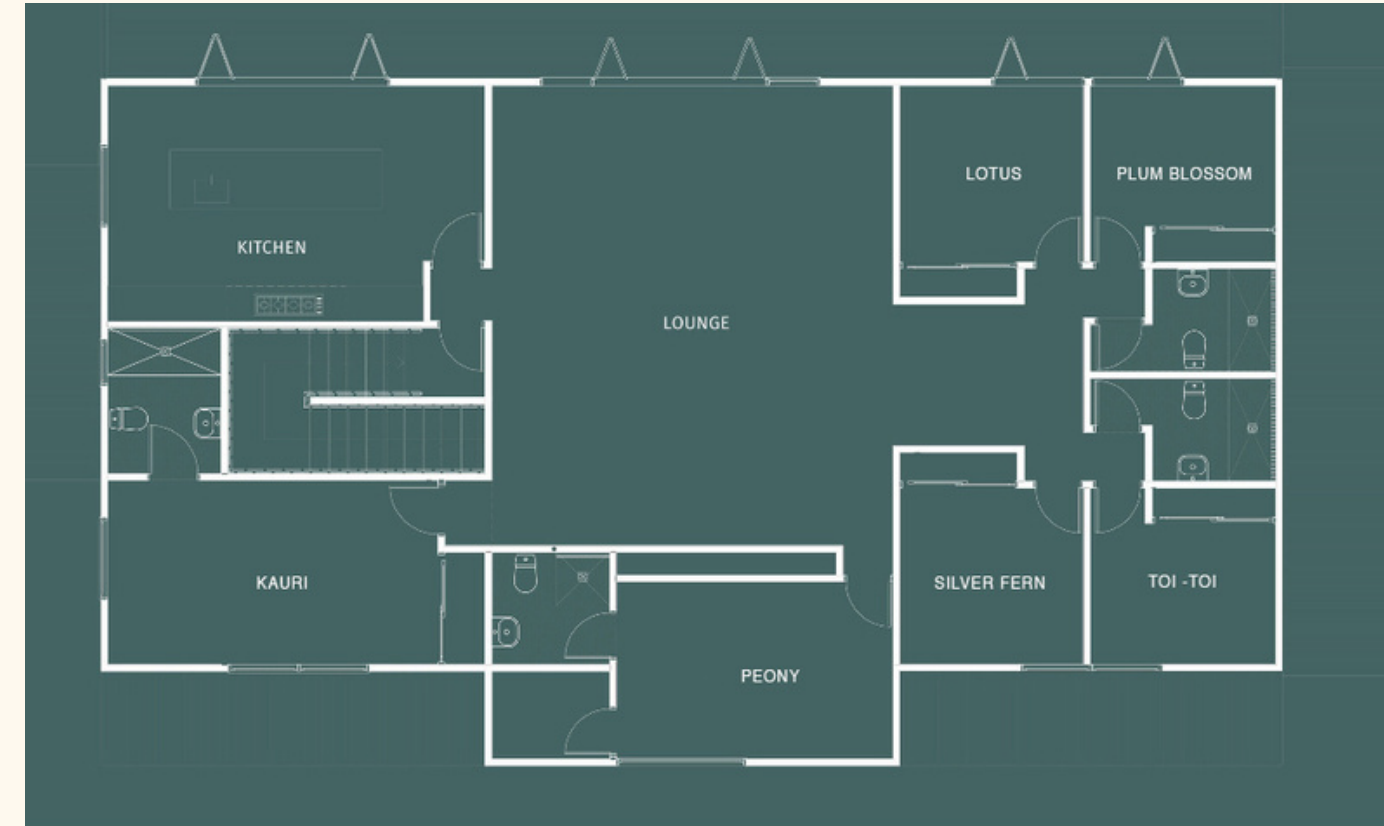
Silver Fern Bedroom
Double

Toi-Toi Bedroom
Twin single

Lotus Bedroom
Double

Plum Blossom Bedroom
Single

2 common bathrooms (with showers)



Our Spaces

Gallery

From \$1900 incl. GST (dry hire)

- Gallery
- Media Room
- Disabled toilets
- Exclusive use of grounds
- Waste and Recycling Disposal
- On-site parking
- Projector available on request
- Site visit
- Support from HUs Site Management

Gallery & Living

From \$2100 incl. GST (dry hire)

- Fully equipped kitchen
- Spacious Lounge with Balcony
- Gallery
- Media Room
- Disabled toilets
- Exclusive use of grounds
- Waste and Recycling Disposal
- On-site parking
- Projector available on request
- Site visit
- Support from HUs Site Management

Conference room layout quoted on request

Working space & accommodation

From \$1100 incl - Day rates available

- Large wooden table
- Fully equipped kitchen
- Spacious Lounge with Balcony
- Full use of grounds
- Waste and Recycling Disposal
- On-site parking
- Tea and coffee
- HUs A4 paper and pens
- Projector available on request
- Support from HUs Site Management

Accommodation

- 6 bedrooms
- 4 bathrooms

Menu

Breakfast

Continental breakfast 27.5pp

- Croissant / toast served with butter and jam
- Biscuits
- Fresh and dried fruits
- Cereals / muesli
- Plain yogurt / coconut yogurt
- Chia and blueberries pudding
- Guacamole / avocados
- Smoked salmon
- Tea / Juices / Coffee

\$27.5pp

Cafe style breakfast menu available on request

Urban flair



Cuisine of the world with a French accent
Private Chef - Catering - Wedding

Morning tea & Afternoon tea

- An assortment of quiches and tarts (sweet and savoury)
- Scones with butter and jam
- Croissants
- Biscuits
- Tea / Juices / Coffee

\$27.5pp

Lunch

French Baguettes made with quality meats and cheeses, fresh vegetables and a selection of salads.

\$19.8pp

Grazing Platter

- Classic
- Gourmet
- Sweet tooth

From \$22pp

Dinner

Buffet style

- A selection of 2 mains, 2 salads & 2 desserts

\$55pp

Fine dining

- 2 course meal executed onsite

\$88pp

BYO

- Wine pairings suggestions available on request

Delivery fee from \$25
Staffing \$45p/h + travel



H
U
S

EVENTS | RETREAT | CONFERENCE